

# 精密钣金产品

Precise Sheet Metal Products

深圳柯赛标识工程有限公司

Shenzhen Cosun Sign Engineering Co.,Ltd.

地址:深圳市龙岗区坪地富坪中路7号东城智居中心

Add: No.1 and No.3 Workshop, No.7 Fuping Middle Road,  
Longgang District, Shenzhen, China.

Tel: 86-755-28351096 or 28351036

86-132 9660 4197 or 138 2871 5919

Email: jade@cosunsign.com cosun@cosunsign.com

2355269045@qq.com

Postcode/邮编: 518117

钣金事业部

METAL WORK DEPT.



柯赛标识成立于2004年,注册资金2080万,在钣金行业拥有十多年资深经验,集产品设计、深化、生产的综合性企业。我们拥有一流的加工设备,配备3000W百超迪能激光切割机1台;2000W大族激光切割机1台;6000w光纤激光机1台,芬兰Prima全自动数控冲床1台;大型数控折弯机2台;数控刨槽机1台;数控剪板机1台;数控锯床机1台;直缝自动焊接机2台;进口SAF-FRO焊机2台;全自动机械手1台;数控拉丝机2台;抛光机3台;自动压铆机1台;进口喷粉设备1套;进口烤漆设备1套等全套设备。获得国际ISO9001:2015质量管理体系认证;ISO14001:2015环境管理体系认证;OHSAS18001:2007职业健康安全管理体系认证,及国家高新技术企业资质。

公司拥有专业的管理团队和资深的设计深化人员。同时,公司下设国际一流的大型专业钣金制作工厂12000多平方米的花园式厂房,100多台行业内技术领先的配套设备,可在短时间内完成大型钣金项目。

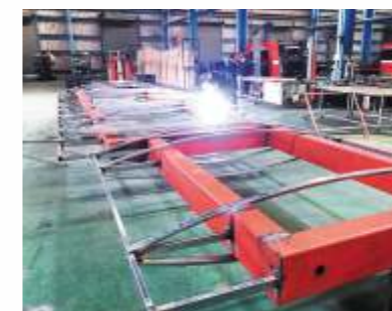
## ABOUT COSUN

Shenzhen Cosun Sign Engineering Co., Ltd (Short for Cosun), as a comprehensive sign company integrating sign design and manufacturing, has more than 10 years of experience in the sheet metal industry since 2004, with 20.8 million registered capital.

Cosun has advanced processing machines and equipments, such as: 6000W fiber laser machine, 3000W laser cutting machine, 2000W laser cutting machine, Finland automatic CNC punching machine, bending machine, CNC recessing machine, CNC plate shearing machine, CNC sawing machine, direct seam electric welding machine, imported SAF-FRO welding machine, auto-robot welding machine, brushing machine; polishing machine; auto stud welding machine, powder coating machine, spray paint machine etc. Also, Cosun has the ISO9001:2015, ISO14001:2015, OHSAS18001:2007 and national high-tech enterprises qualification certificate.

Cosun has professional management team and senior designers. Meanwhile, consisted of world-class large-scale sheet metal factory, with 12,000 sqm factory and more than 100 technology-leading supporting equipment, large-scale sheet metal project can be finished in a short delivery time.

## Surroundings 公司环境



- 国家高新技术企业
- ISO9001:2015质量管理体系认证
- ISO14001:2015环境管理体系认证
- OHSAS18001:2007职业健康安全管理体系认证
- 龙岗区重点文化企业
- 广东省政府采购中心供应商
- 深圳市政府采购中心供应商
- 大连市政府采购中心供应商
- National High-tech Enterprise
- ISO9001:2015
- ISO14001:2015
- OHSAS18001:2007
- Key Cultural Enterprise of Longgang District
- Supplier of Guangdong Provincial Government Procurement Center
- Supplier of Shenzhen Government Procurement Center
- Supplier of Dalian Government Procurement Center

# Sheet Metal Facilities

## 钣金加工设备

柯赛, 经过10余载的发展, 已经形成了制作钣金产品整个流程所需要的整套设备, 并且已经熟练掌握, 灵活运用。为适应市场及公司发展要求, 成立精密钣金事业部。专注新能源、环保设备、及智能化一体机等终端产品的钣金深化和精密加工。

After more than 10 years of development, COSUN has all Facilities in Metal Sheet Industry, and Good Knowledge of operation and Production. To meet market and company developing requirements, we established metal sheet dept. focusing on new energy, environmental signage and digital signage.



6000W激光切割机  
6000W Laser Cut Machine



大型龙门吊  
Crane



大型数控折弯机  
Bending Machine



大型数控折弯机  
Bending Machine



直缝自动焊机  
Direct Seam Electric Welding Machine



液压闸式剪板机  
CNC Plate Shearing Machine



水性漆喷漆房  
Water Based Paint Workshop



全自动机械手  
Robot Welding



数控刨槽机  
CNC Recessing Machine



数控锯床  
CNC Sawing Machine



进口SAF-FRO焊机  
Imported SAF-FRO Welding Machine



自动压铆机  
Auto Stud Welding Machine



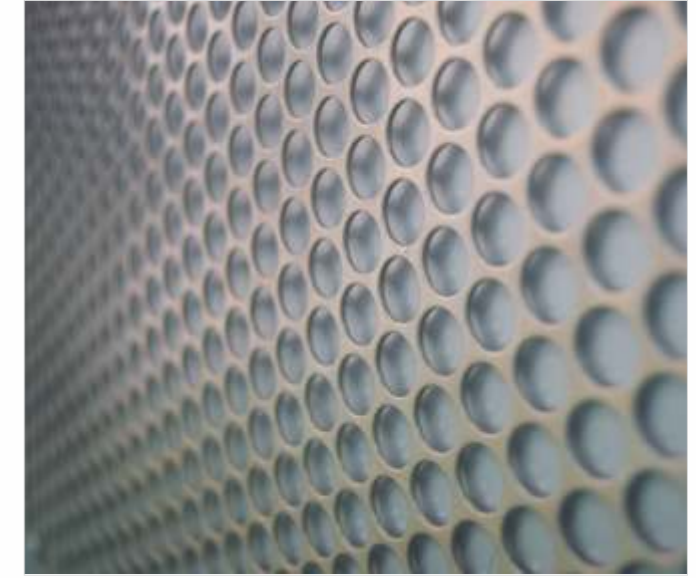
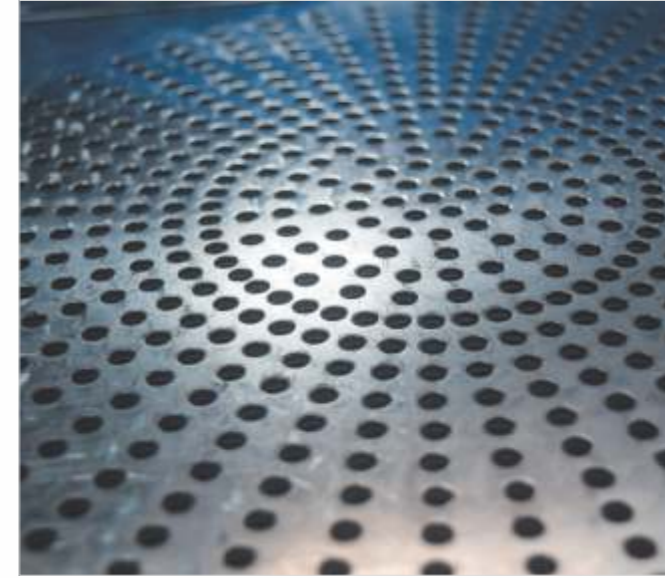
UV平板打印机  
UV Print Machine



喷砂机  
Sandblast Machine



滑轨三角拉丝机  
Brush Machine



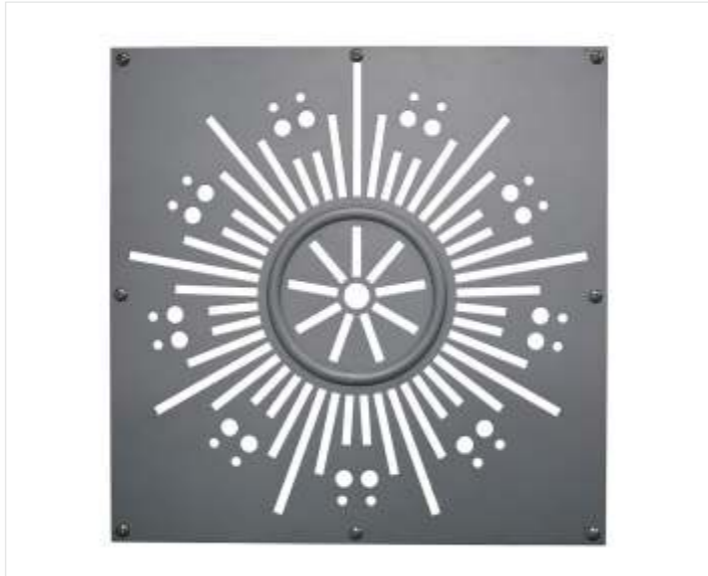
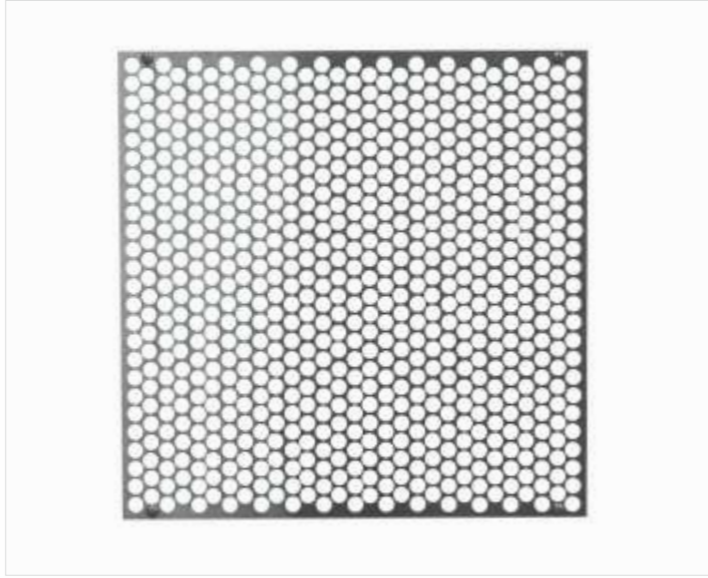
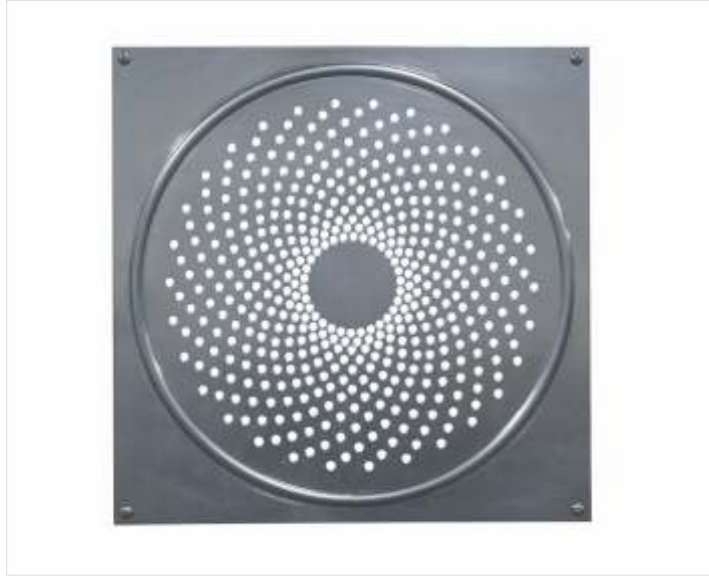
1. 外墙装饰, 透气性好, 装饰独特
2. 展厅专营店, 视觉感强, 高档大气
3. 室内天花, 耐磨坚固, 安全防火

1. Exterior Wall Decoration, Good Ventilation And Unique Decoration;

2. Special Store For Exhibition Hall, With Strong Visual Sense And High-grade Atmosphere;

3. Indoor Ceiling, Wear-resistant, Safe And Waterproof





02

## CNC Laser Cutting Products 数控激光切割加工

高精度、高效能、大尺寸专用设备

High Precision, High Efficiency, Large Size Special Equipments

型号: LASER SHARP 2060 fiber laser

发生器功率: IPG 光纤 6KW

加工范围: 6000mm × 2000mm

各轴行程:

X = 6070 mm

Y = 2045 mm

Z = 120 mm

标准Prima Power自家制自动对焦切割头  
线性电机X、Y轴速度 120 米/分钟, 联动速率

高达 170 米/分钟

加速度: 1.2g

7.5" 镜匣

高压切割部件及气体转换开关(氮气和氧气  
切换)

PRIMA ELECTRO CNC 数控系统, 并配备 19  
寸 LED 屏幕

SIPS(安全撞击保护系统), 在与工件碰撞时提  
供机头保护

符合CE和CDRH规定的安全防护罩

抽风除尘和过滤系统 (3200 m<sup>3</sup>/h)

板材边界自动检测及程序自动偏转

喷嘴自动清洁

随机消耗品和光路清洁材料





激光切割产品  
Laser Cutting Products



激光切割产品  
Laser Cutting Products



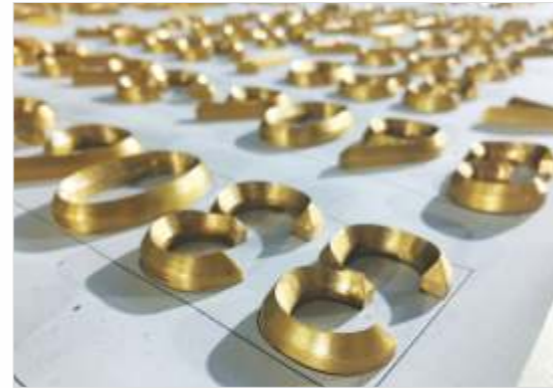
门牌  
Door Sign



门牌  
Door Sign



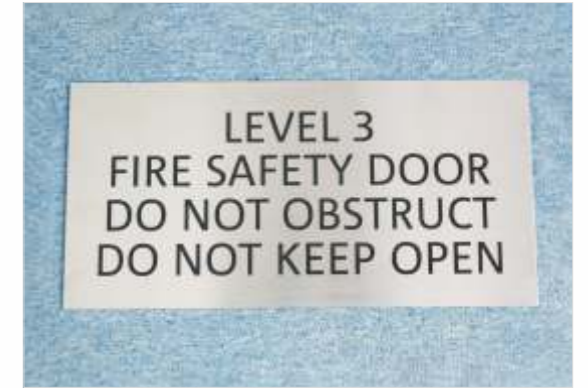
金属立体字  
Metal Letters



金属立体字  
Metal Letters



门牌  
Door Sign



门牌  
Door Sign



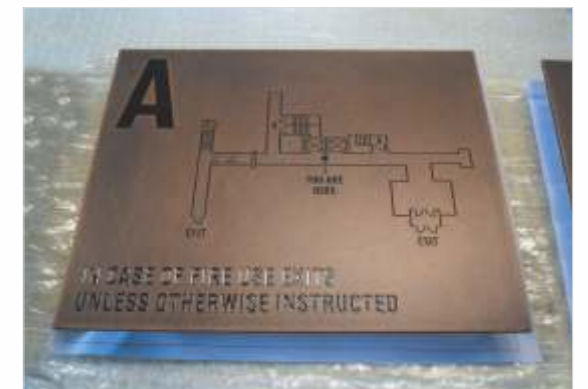
金属立体字  
Metal Letters



金属立体字  
Metal Letters



门牌  
Door Sign



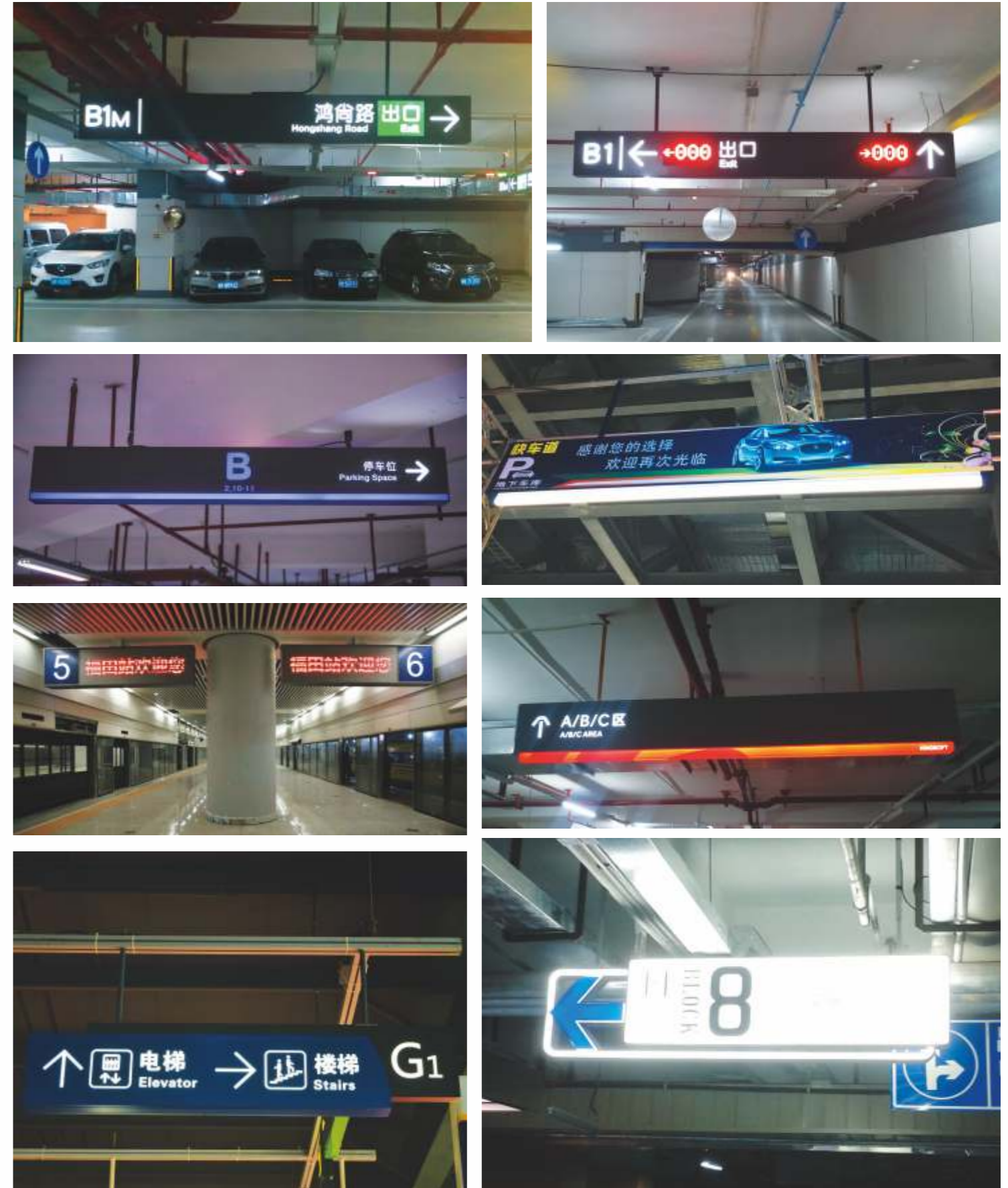
门牌  
Door Sign



05 Kiosk & Smart Sign  
智能数字信息发布标牌



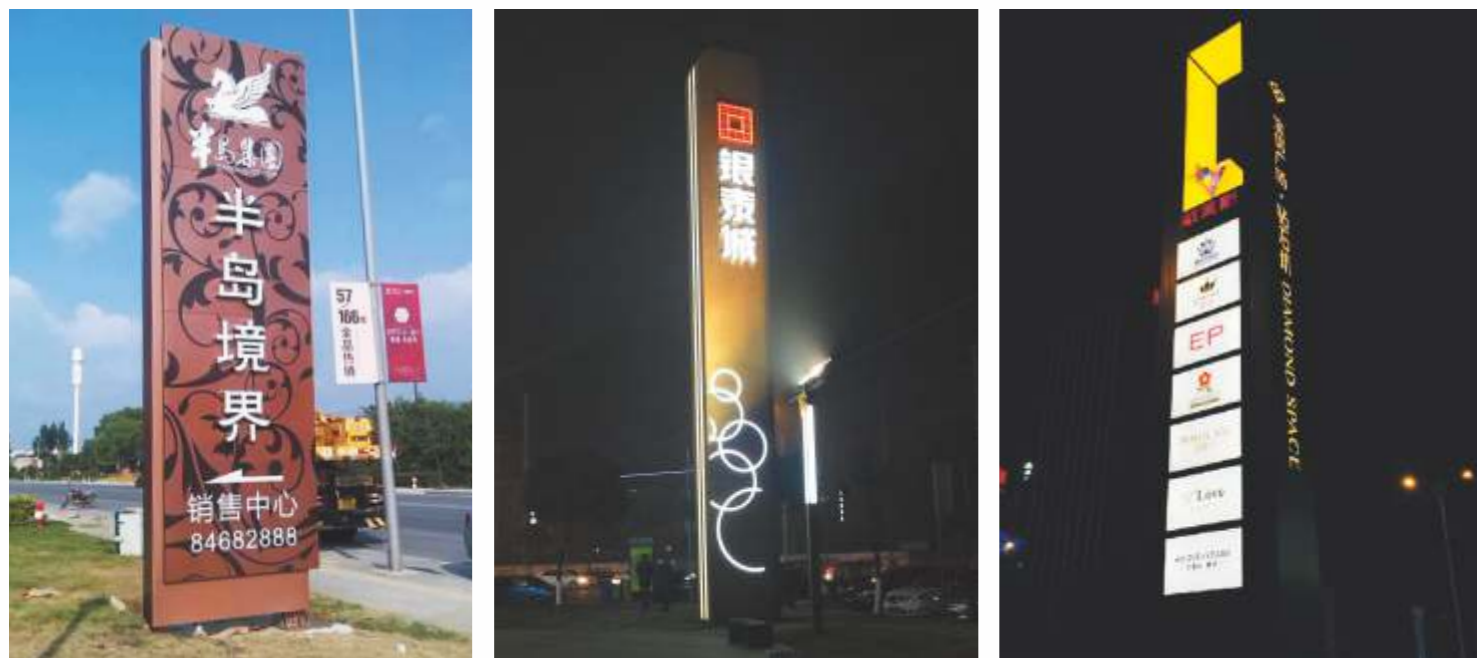
Parking Ceiling Sign 06  
停车场吊牌







09 Pylon Sign  
大型钣金立牌



Other Sheet Metal Products 10  
其它钣金产品

